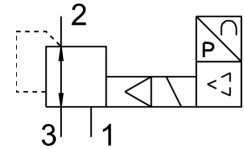


Proportional pressure control valve VPPM-8TA-L-1-F-0L2H-C1

FESTO

Part number: 572410



Data sheet

Feature	Value
Nominal width pressurization	8 mm
Exhaust nominal width	7 mm
Type code	VPPM
Actuation type	Electrical
Sealing principle	Soft
Mounting position	Any
Structural design	Pilot-controlled diaphragm regulator
Short-circuit protection	For all electrical connections
Safety instructions	VPPM safety position: if the supply cable breaks, the outlet pressure is maintained in uncontrolled form.
Symbol	00995303
Reverse polarity protection	for all electrical connections
Reset method	Mechanical spring
Type of control	Pilot-controlled
Valve function	3-way proportional pressure control valve
Display type	Back-lit LCD
Pressure regulation range	0.02 bar ... 2 bar
Inlet pressure 1	0 bar ... 4 bar
Max. pressure hysteresis	0.01 bar
Standard nominal flow rate	450 l/min
DC operating voltage range	21.6 V ... 26.4 V
Max. current consumption	300 mA
Duty cycle	100%
Max. electrical power consumption	7 W
Residual ripple	10 %
Operating medium	Compressed air as per ISO 8573-1:2010 [7:4:4] Inert gas
Information on operating and pilot media	Operation with oil lubrication not possible
Certification	RCM compliance mark c UL us - Listed (OL)
KC characters	KC EMC
CE marking (see declaration of conformity)	As per EU EMC directive
Corrosion resistance class (CRC)	2 - Moderate corrosion stress
Temperature of medium	10 °C ... 50 °C
Degree of protection	IP65
Ambient temperature	0 °C ... 50 °C

Feature	Value
Product weight	560 g
Linearity error FS	2 %
Temperature coefficient	0.04 %/K
Repetition accuracy FS	0.5 %
Electrical connection	Via sub-base
Type of mounting	Optionally: With through-hole With accessories
Pneumatic connection 1	Sub-base
Pneumatic connection 2	Sub-base
Pneumatic connection 3	Sub-base
Note on materials	RoHS-compliant
Housing material	Wrought aluminum alloy Anodized